

HISTORY Vol. 2

238TH ENG. CO. COMBAT BN.



Binders of this volume presented  
to the 258th Engineer Combat Battalion  
by James T. Brown  
in memory of his wife  
Tomera J. Brown



③  
*America's First "Secret Weapon"*

Aachen, Germany







Cadenbach's Aachen

Where we stayed Nov. '44  
Battalion Headquarters  
238th Engr. C. Bn.



## ENLISTED MAN'S PASS

(Name) \_\_\_\_\_ (Grade) \_\_\_\_\_ (Army serial No.) \_\_\_\_\_  
is authorized to be absent from his post—

From \_\_\_\_\_

To \_\_\_\_\_

To visit \_\_\_\_\_

Signed \_\_\_\_\_

(OVER)

Company commander

In accepting this pass, I understand that—

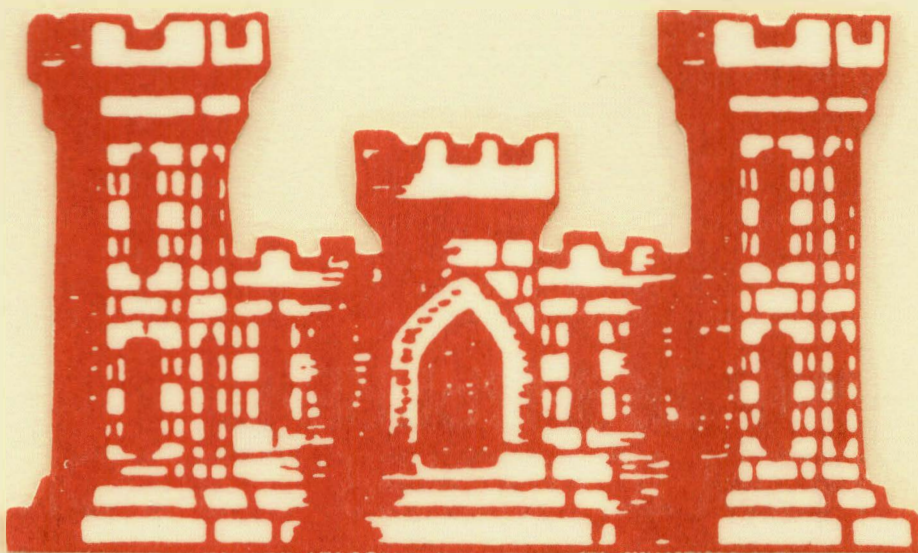
1. I am a soldier at all times and subject to both civil and military control.
2. I must be temperate and not do anything in public to disgrace myself or the Army.
3. I must be polite to all people I meet, whether they are in uniform or civilian clothes.
4. A pass is a privilege, and I may not get another one if I do not conduct myself properly.

I have read the above rules of conduct and will obey them.

(Signature) \_\_\_\_\_

W. D., A. G. O. Form No. 7  
September 8, 1942

☆ GPO 16-30563-1





Germany

I

Bridge in Stoleburg, Germany  
Built by "C" Company

III

The Rhine River  
Cologne, Germany

IV

Company "A"

Standing up against boards  
on left of bridge

1. Colonel Jay P. Dawley
2. Captain Leo Smith

VI

Eischweiler, Germany





Stoleburg, Germany  
Built by "C" Co.

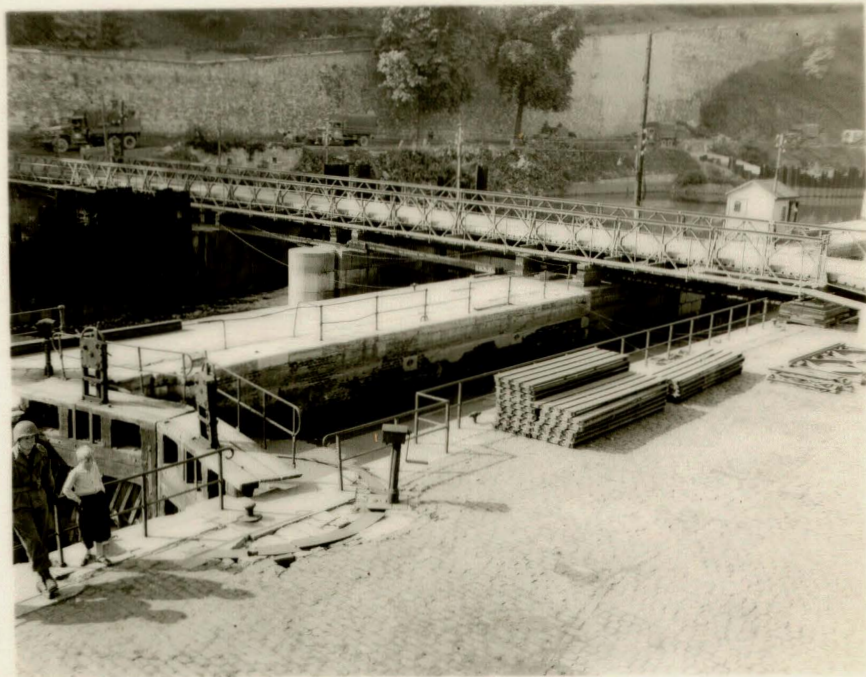


Photo by 238 Eng C. Bn.

The Rhine River  
Cologne, Germany



Co. "A"  
Standing against boards  
Col. Jay P. Dawley  
Captain Leo Smith

*Near Eischweiler*



Eischweiler



Pictures Received From Geo. Worth 1952, while on duty in Germany



AACHEN, GERMANY - THE ARROW INDICATES THE SPOT WHERE "FLATFOOT" FATH LOST HIS.



Co. "B" BUILT A DOUBLE-DOUBLE BAILEY OVER THIS RAP. LOCATED NEAR THE HUGE OPEN SURFACE ALINE ON THE ROAD BETWEEN WEISCHWILLER AND DÜREN.



THE FIELD TO THE REAR OF THE SIGNS IS WHERE LT. MCCLURE WAS KILLED AND CAPT. REICHMAN LOST HIS LEG IN NOV. 1949.

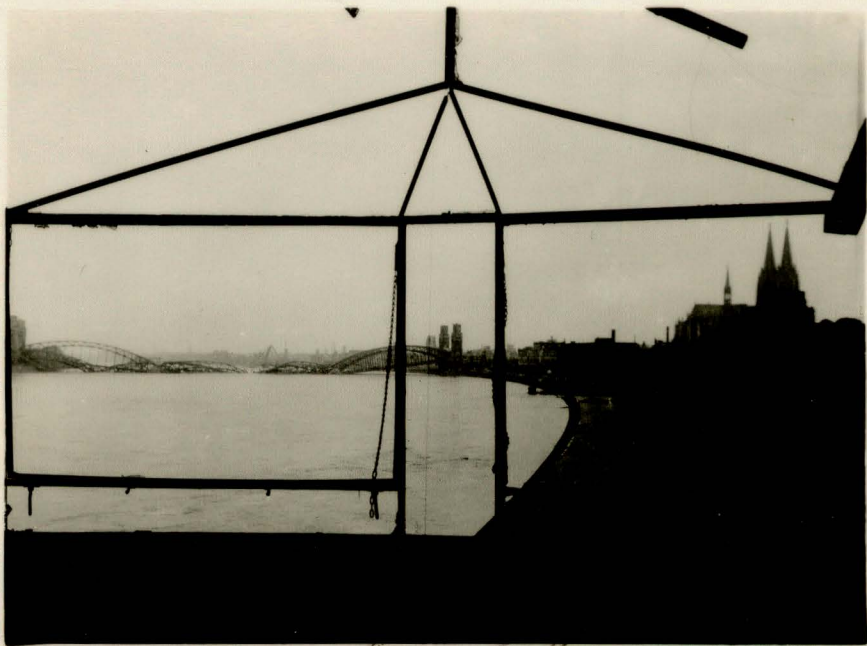


THE FIRST BRIDGE ON THE AUTOBANN LOCATED JUST OUTSIDE EISCHWILLER. THE BN. HAD QUITE A JOB REPAIRING THE ROADWAY OF THIS BRIDGE.



KONIGSWINTER, GERMANY - THE BRIDGE SITE ON THE RHINE WHERE THE 335<sup>th</sup> CONSTRUCTED TREADWAY BRIDGES BY ARTIFICIAL MOON LIGHT.





The Rhine

"Joe Lightning" Collins, CG 1st Corps



Aachen, Germany



Aachen



Aachen

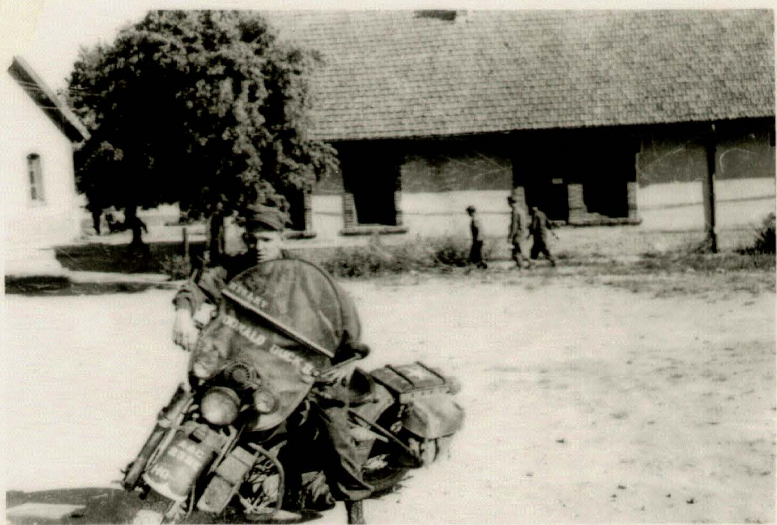
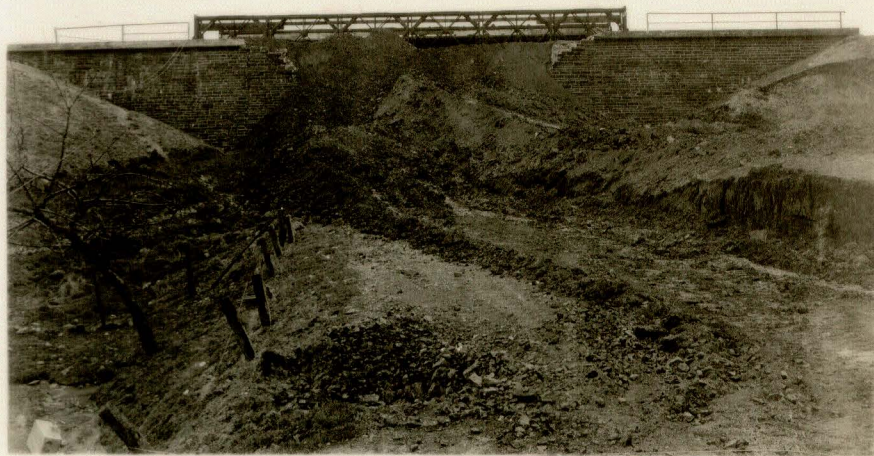
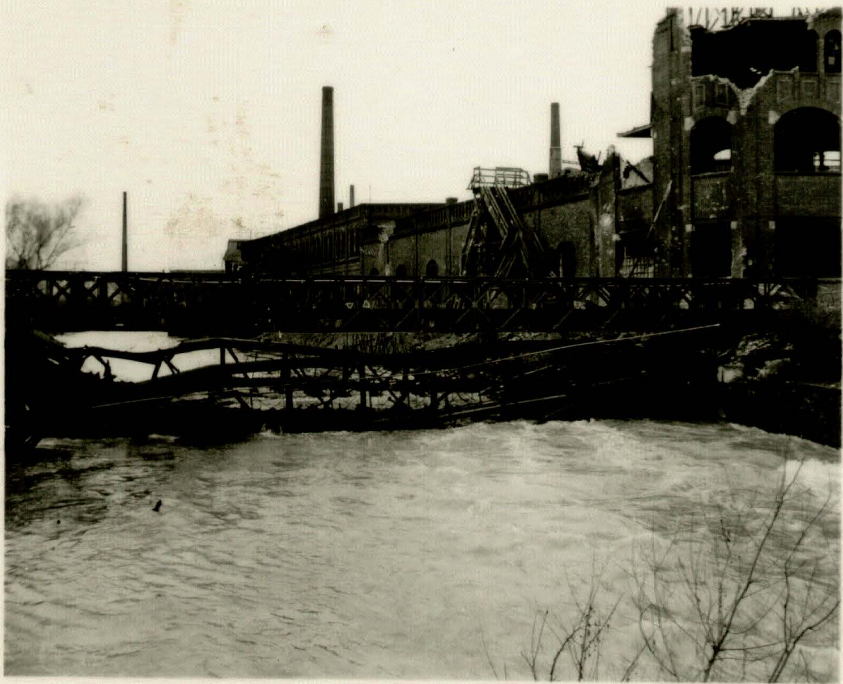


Aachen



US  
Ammunition + fuel train  
burning  
on way to Paris - first  
trip on leave  
first trip to Paris in April  
1944  
Made by Wendell  
Slunker





CC Wolf or Hivley



Lieckens

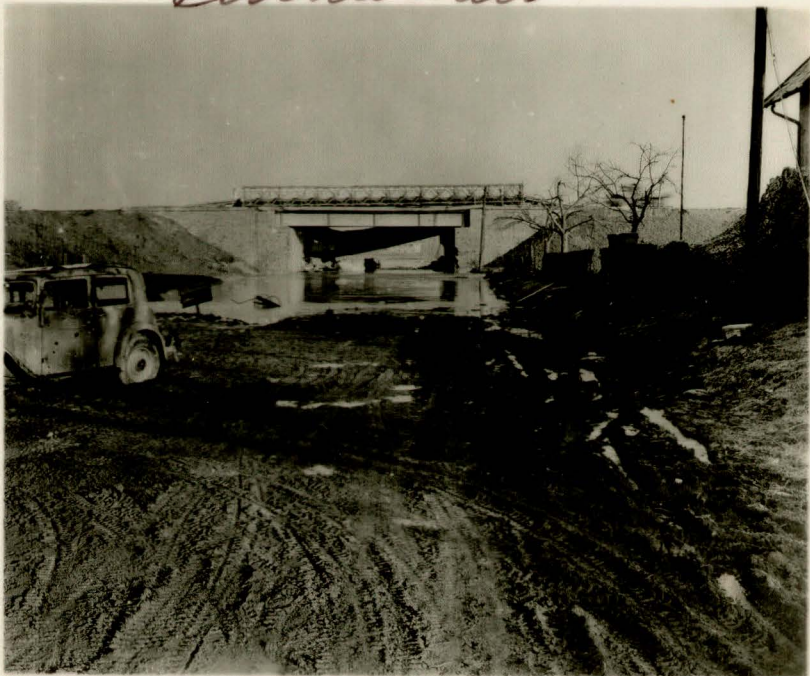








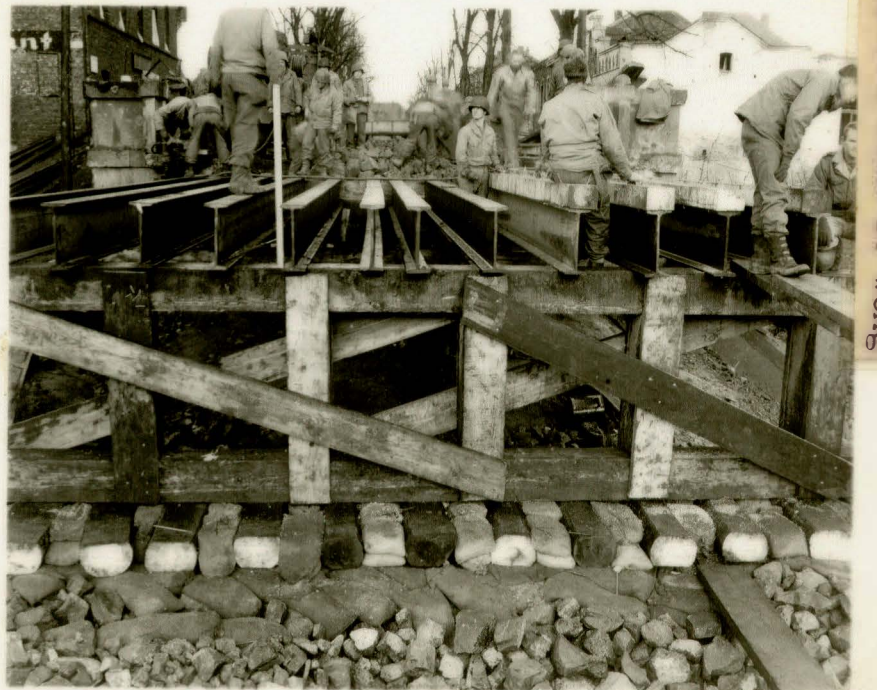
*Eischweiler*



*The Rhine*



*Auto bahn*



Captain John B. Wong

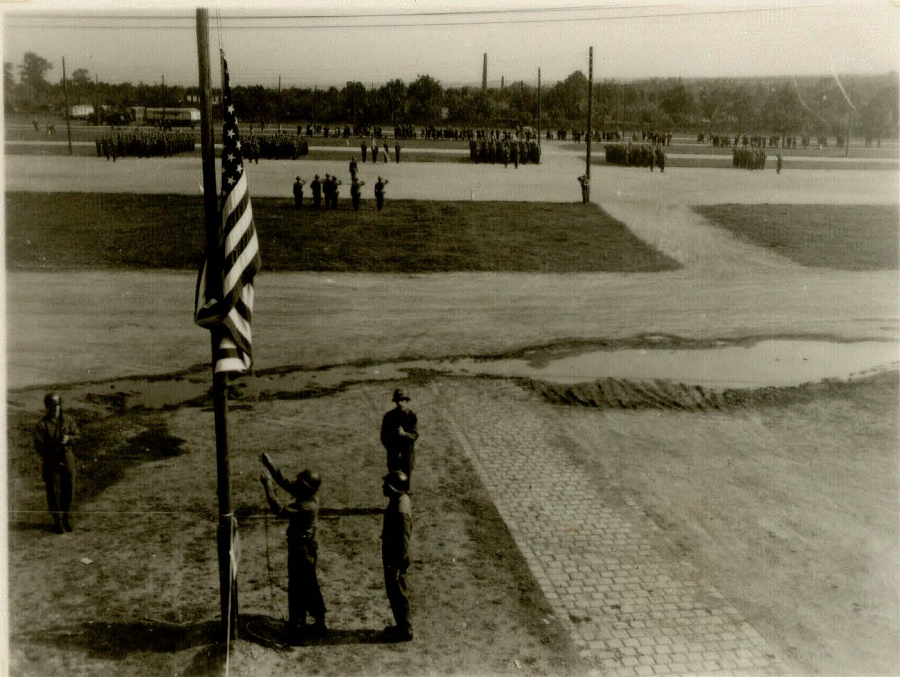
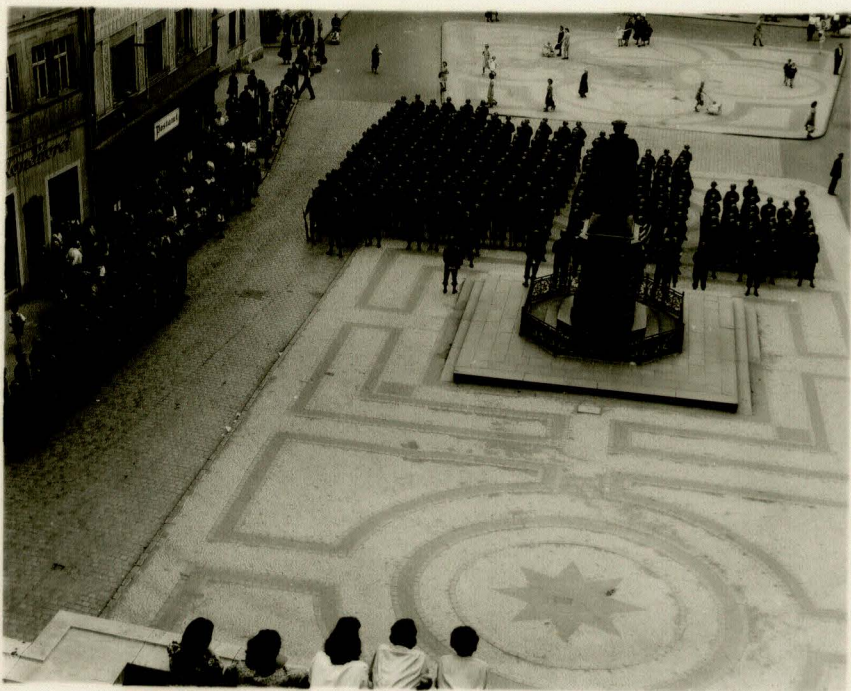
Captain Tom Brown

John B. Wong Bridge  
Germany



27

EISLEBEN, GERMANY.





# EISLEBEN, GERMANY



COGNAC FACTORY OUTPOST



RUSSIAN'S ARRIVE



FAREWELL DAY



DPs HERDING HOME



RAISING FLAG POLE



V-E DAY PARADE



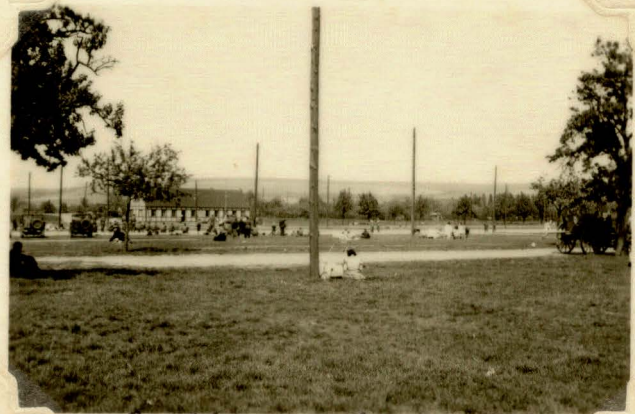
"V-E DAY" PARADE



"V-E DAY" PARADE



SOFT BALL



RECREATION FIELD



COMPANY "A."



mickey "c"

MICKLER



Brower "c"



Griffin, Weeks, Michelson  
Pinson

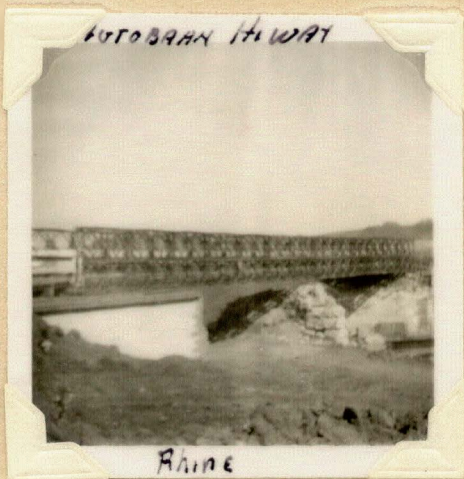


Heading Home

Lt. Rude

OH BOY

YOU SEE



ROBERTA H. WAT

Rude



EN P. 10



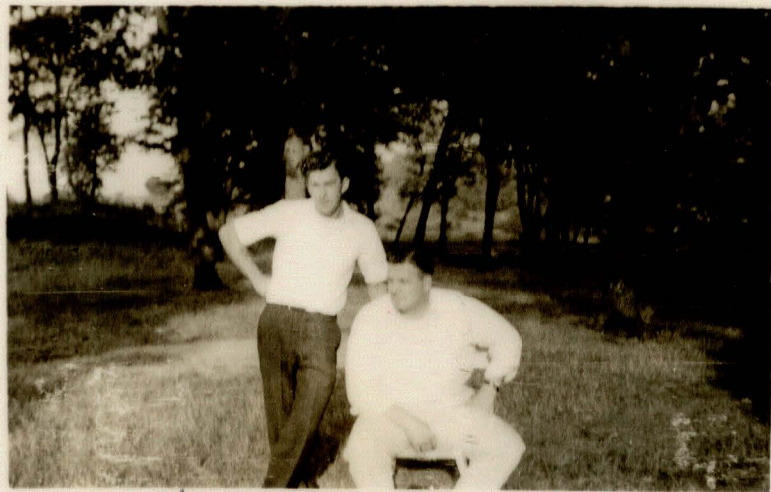
31

# COMPANY "B."



FISCHWEILLER, GERMANY

CARLTON & BRICK'S BANGALORE II



KOCHAN - FATH



KING - WHITE - WARMATH  
CARLTON



RAY



Jesse Miller

Throckmorton



"BP" AT EISELESEN



KETNER



Ashbury  
Kinney

JOE DURRANSKI HAROLD  
PENDLEY



DUREN, GERMANY

WILLIE MCGRAW  
PAT COLEMAN



# COMPANY "B"



HASWELL & WIFE



DONNAM HALL

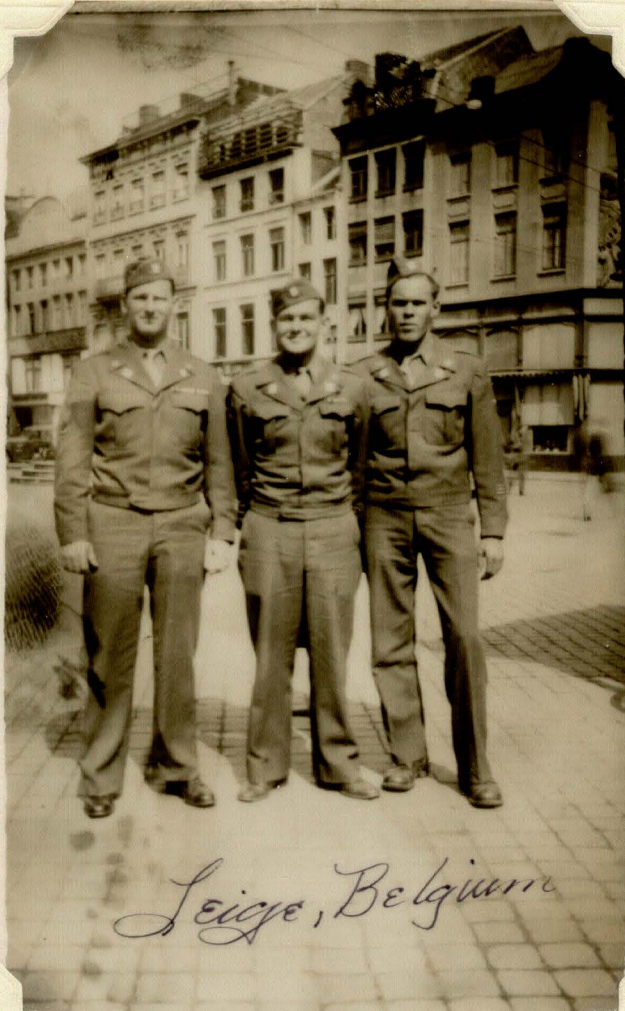


HOLDER - McCULLOUGH



CAMP CHICAGO, FRANCE

RAEL ROAD



Leige, Belgium

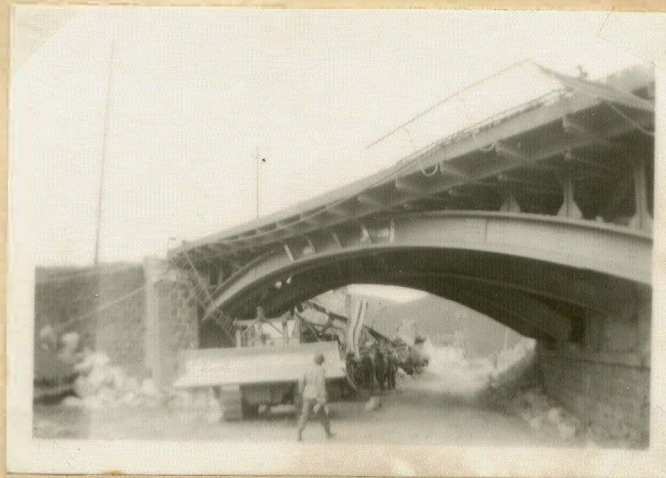
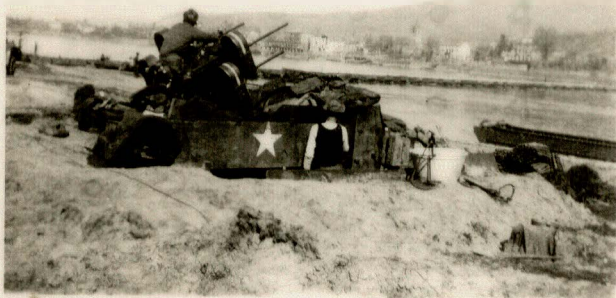
KEY - CARLTON - LEE



Goodfellows

E. J. Miller

The Rhine



Stringfellow

Bobby





COMPANY "B"



1/SGT. STRAUCH  
VENO.



Book

RAEL'S GRAVE - HENRI-CHAPPELLE



LT. WORTH & CARLTON



BYRD - KING



ROER RIVER



ROSSER



ROER RIVER



PISTAKI MAXWELL, WORTH



LT. WILSON



WELLS, PISTAKI, LONG, CARLTON  
FALCON



Aachen - 1944



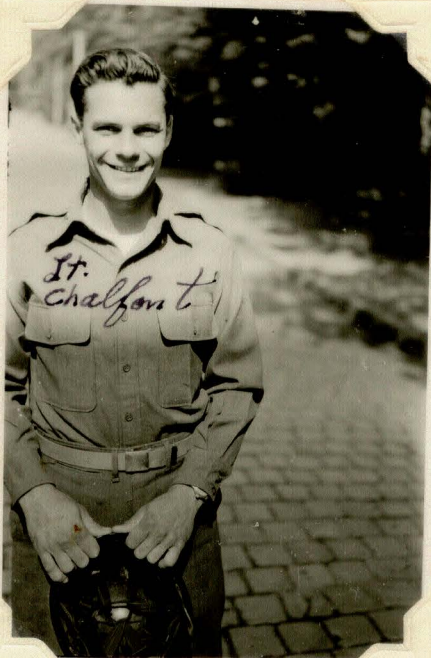
WELLS & "QUACK-QUACK"  
KOCHAN



PISTAKI - MCGRAW



COMPANY "C."





H & S. COMPANY

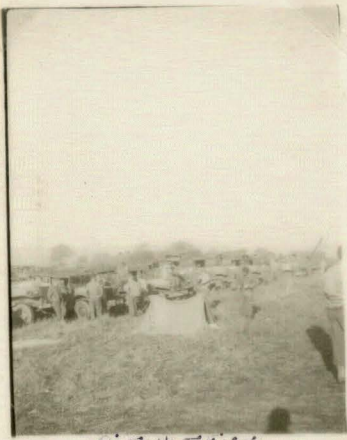


Stonehouse  
July 4, 1944





Miscellaneous  
Scenes



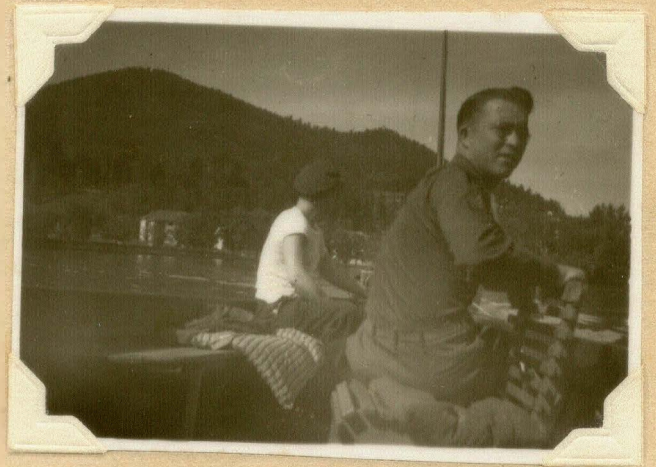
Dialoben



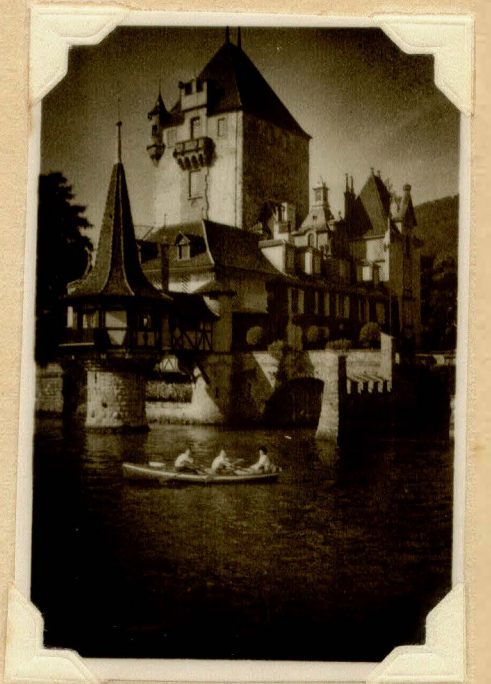
SWITZERLAND VIEWS



Eisleben Germany



Bud  
Baish





*NORDHAUSEN, GERMANY CONCENTRATION CAMP.*



American troops file past rows of victims at Lager Nordhausen concentration camp in April 1945:





Glasgow, Matheny(?)  
Anthony, Flake and Barlow.  
France, July 4, 1944.



Anthony, Wolff, Tom Flake,  
Schabert, and Glasgow,  
France, July 4, 1944.



Schabert



Webb, pulling on the cable and  
Schabert looking on. Jesse  
Wolff operating the hoist to  
pull up the blown up truck  
for parts.



Jesse Wolff, John Mathis,  
Scotty Glasgow and Stonehouse.



May be Anspaugh with Jesse  
Wolff's wrecker, in the Bulge.  
Capt. Tom Browne was our Co.  
Commander at this time.  
Belgium, December, 1944.



Something missing here, don't  
you think so? We put the  
treads on for extreme,  
difficult going, snow or mud,  
during the Bulge. Dec. 1944.





William Bonds, "C", John Taylor,  
Along side of a Brockway.



Taylor, Camp Detroit,  
August 17, 1945



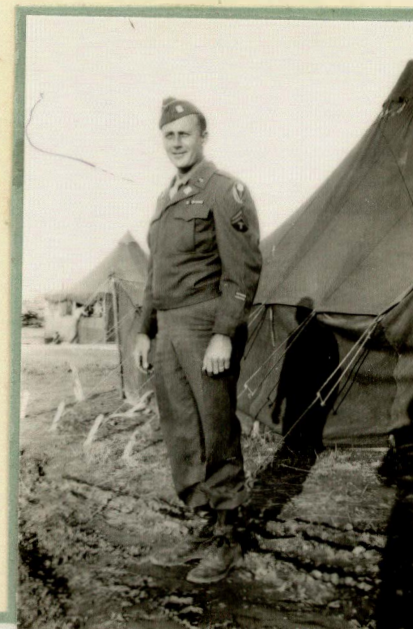
Jesse Wolff, Harold Freedman  
Sissone, France  
Near Camp Philadelphia.



Left-John Taylor, Engr.  
Center- Olaf Miller, Chem.  
John and I (Jesse Wolff)  
visited my brother-in-law  
with permission of Lt. Wilson



Jesse Wolff, seated front,  
with some pals at a  
sidewalk resturant.



Taylor, all slicked up and  
no place to go. This day  
was very hot. The jacket  
was put on for the picture.  
Camp Detroit, Aug. 17, 1945.



Glasgow, Stonehouse,  
Mathis (?), Feb. 1945



Don Honer, Harold Freedman.  
Honer was on the motorcycle,  
Freedman a welder with  
Jenkins. We lost Jenkins in  
Konigswinter right after we  
crossed the Rhine River.  
Sissone, near Camp Phila.



Tom Mix  
Roy Rogers (Schabert)